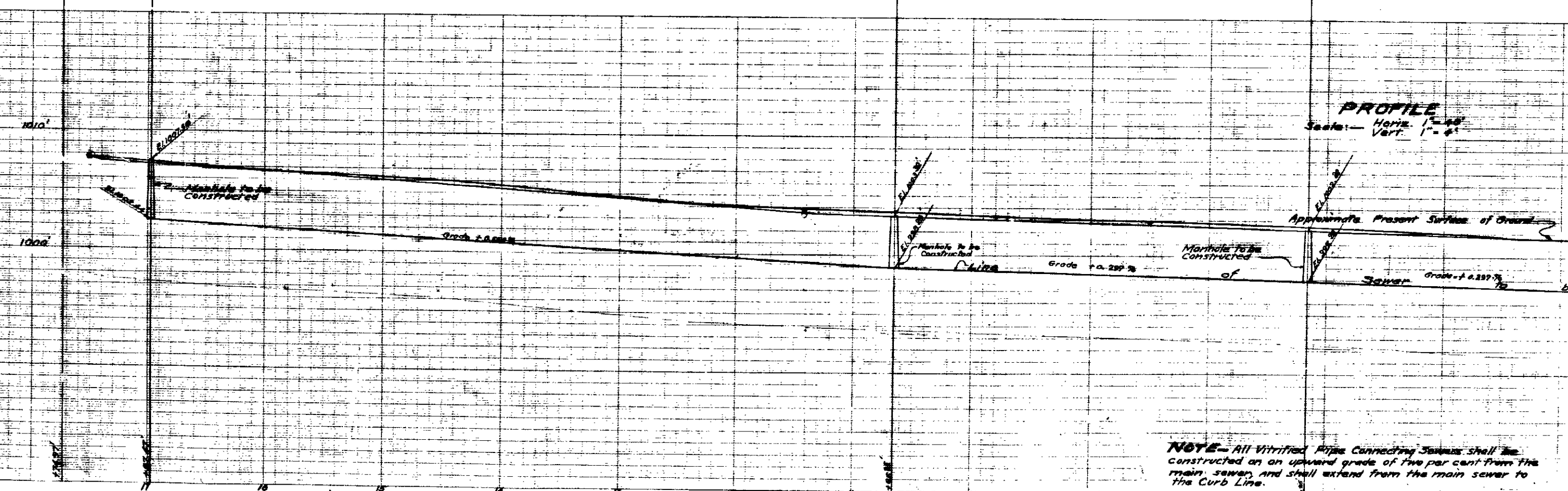
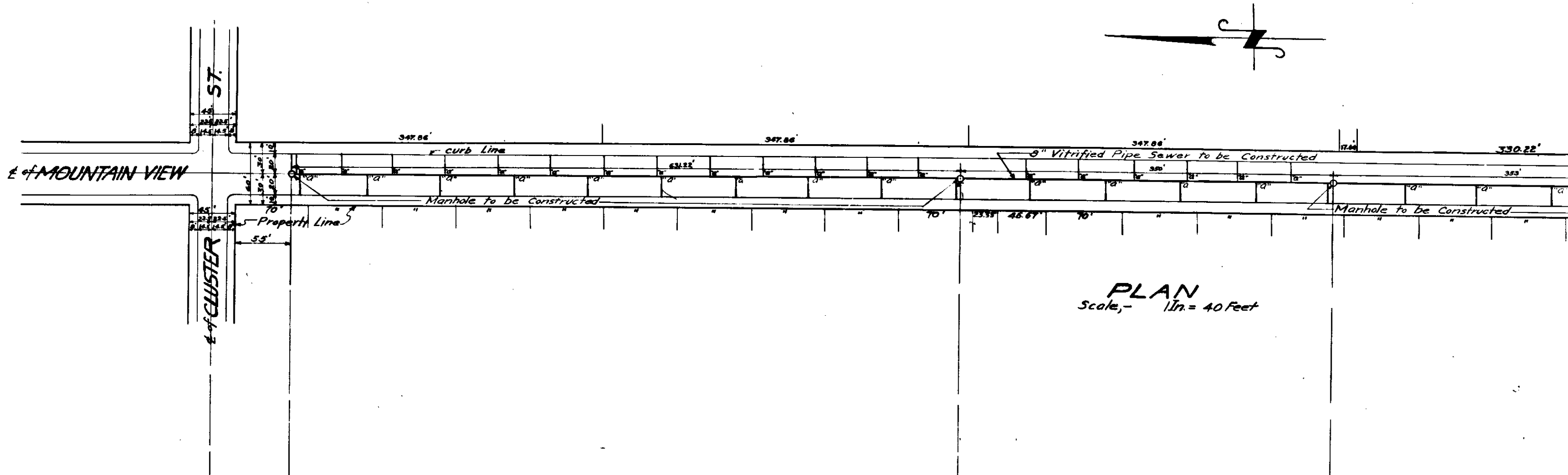


PLAN
Scale, - 1/4" = 40 Feet

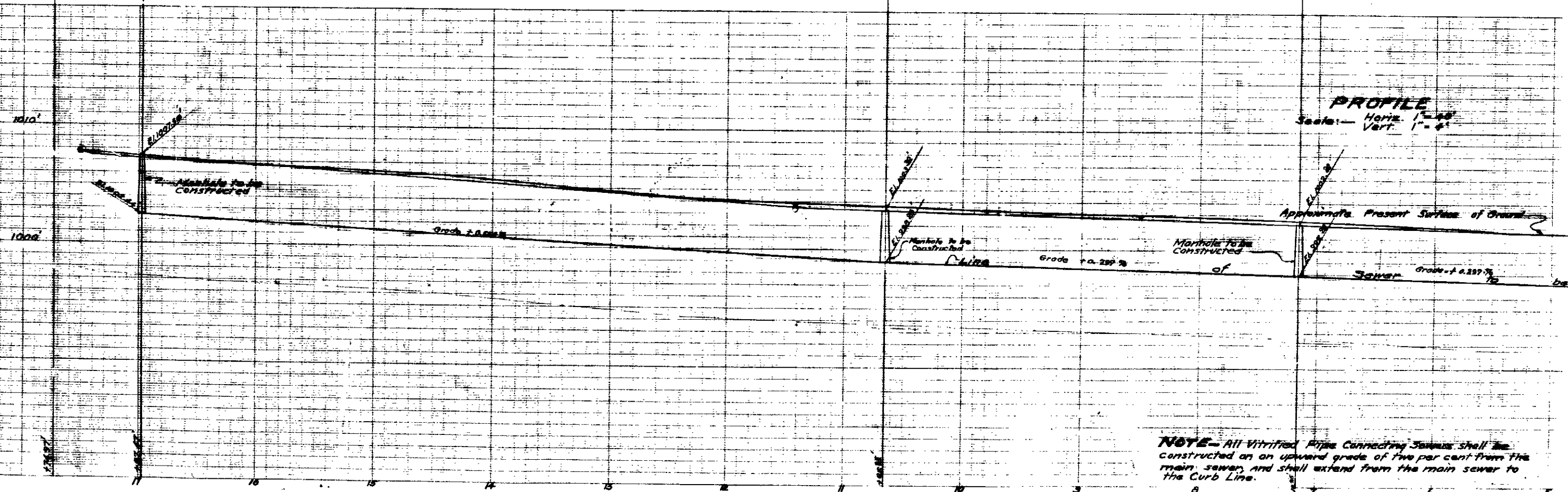


PROFILE
Scale: - Horiz. 1" = 40'
Vert. 1" = 4'

NOTE - All Vitrified Pipe Connecting Sewers shall be constructed on an upward grade of two per cent from the main sewer and shall extend from the main sewer to the Curb Line.



PLAN
Scale, - 1" = 40 Feet



PROFILE
Scale: - Horiz. 1" = 40'
Vert. 1" = 4'

NOTE - All Vitrified Pipe Connecting Sewers shall be constructed on an upward grade of two per cent from the main sewer and shall extend from the main sewer to the Curb Line.